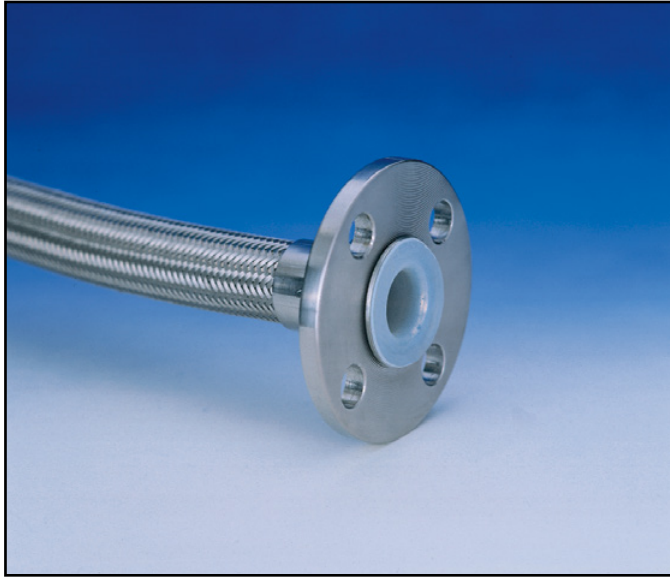


JACK-FLEX • Heavy Wall Hose of Convuluted PTFE with Flared-Tube



Construction

Jack-Flex is constructed from convoluted, heavy wall, seamless extruded white lined in a stainless steel braid. It offers the latest in hoses lined with PTFE with flared tubing. In this process, the convoluted tubing is passed through the flange retainer, and flared over the face of the flange, effectively isolating the flange from the transfer chemical. Jack-Flex is ideal for situations where internal corrosion of the fitting and contamination of the chemical is not tolerable.

Applications

- Thermal Cycling
- Transfer of almost all chemicals
- Acid Transfer
- Vibration Elimination
- Sanitary Applications
- Short Assembly Specification
- Applications requiring high flexibility

Available as factory-built and tested assemblies only.

Benefits

- Internal corrosion of fittings eliminated.
- No metallic contamination of transfer chemical from fitting.
- Simplified installation - no gaskets required. Seal is made on flare.
- Helical design of hose aids draining and cleaning.
- Suitable for thermal cycling or steam applications - will not delaminate.
- Reduced energy losses through fitting gives higher flow rates.
- Eliminates crevice corrosion from flange insert in hose.
- Temperature Rating: -65° F (-54°C) to +450°F (+230°C)

Part Number White	Nominal Hose Size		Maximum Working Pressure	Minimum Burst Pressure	Minimum Bend Radius
	I.D.	O.D.			
JF-12	0.78"	1.08"	425 PSI	1700 PSI	3.0"
JF-16	0.97"	1.36"	350 PSI	1400 PSI	4.0"
JF-20	1.32"	1.70"	330 PSI	1350 PSI	5.5"
JF-24	1.49"	1.85"	275 PSI	1100 PSI	7.0"
JF-32	1.92"	2.43"	250 PSI	1000 PSI	8.5"
JF-48	2.91"	3.80"	100 PSI	400 PSI	12.0"
JF-64	3.92"	4.95"	100 PSI	400 PSI	18.0"

All pressures calculated at 70°F. For applications involving higher temperatures, please contact the factory. Conductive Black is available on request.