

# CONVOLUTED & JACK-CHEM FITTINGS

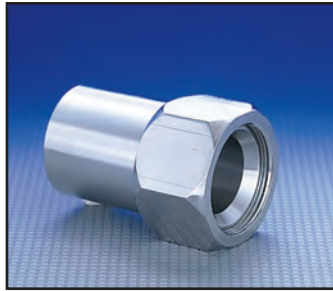
## THREADED FITTINGS

**Male Pipe Hex**



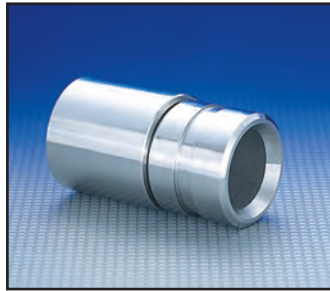
Part #	Fitting Material
10	Carbon Steel
20	Stainless Steel

**Female JIC 37°**



Part #	Fitting Material
30	Carbon Steel
40	Stainless Steel

**Butt Weld/Victaulic\*\***



Part #	Fitting Material
91	Stainless Steel

US Hose manufactures and inventories over 500 sizes and styles of fittings. Fitting materials consist of carbon steel, stainless steel, combination, and polypropylene.

We will manufacture custom fittings to your specifications. Contact our customer service department for more information about this service.

\*Special Fittings - Please consult the factory for pricing and availability.

\*\*Pipe is standard, tube available. Please specify.

## I-LINE FITTINGS

**Male I-Line**



Part #	Fitting Material
98	Stainless Steel

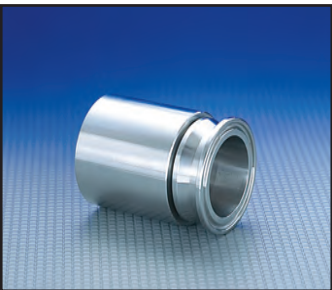
**Female I-Line**



Part #	Fitting Material
99	Stainless Steel

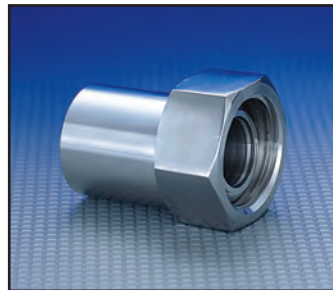
## SANITARY

**Sanitary**



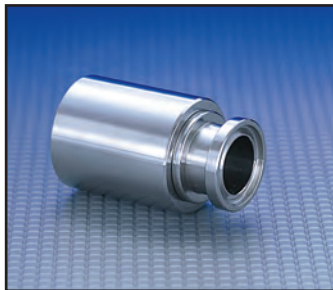
Part #	Fitting Material
70	Stainless Steel

**Bevel Seat Sanitary**



Part #	Fitting Material
69	Stainless Steel

**Mini Sanitary**



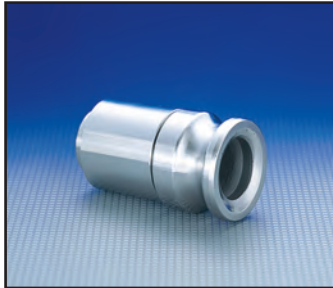
Part #	Fitting Material
71	Stainless Steel

Other sanitary fittings available - contact the factory for additional fitting information.

# CONVOLUTED & JACK-CHEM FITTINGS

## CAM & GROOVE

**Male C & G**



**Part #** 73 **Fitting Material** Stainless Steel

**Female Rigid C & G**



**Part #** 83 **Fitting Material** Stainless Steel

**Encapsulated C & G**



**Part #** 88 **Fitting Material** Stainless Steel

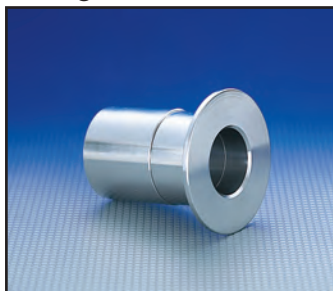
**Encapsulated C & G**



**Part #** 85 **Fitting Material** Stainless Steel

## FLANGES

**Flange Retainer**



**Part #** 50 **Fitting Material** Stainless Steel

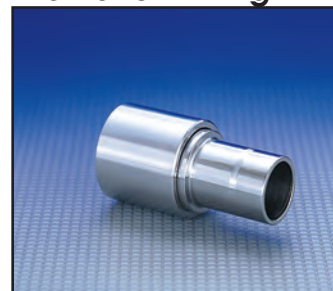
**PFA Encapsulated Flange Retainer**



**Part #** 60 **Fitting Material** Stainless Steel

## COMPRESSION

**Tube Stub for Instrumentation Fitting\***



**Part #** 48 **Fitting Material** Stainless Steel

\*Please consult the factory for pricing & availability.

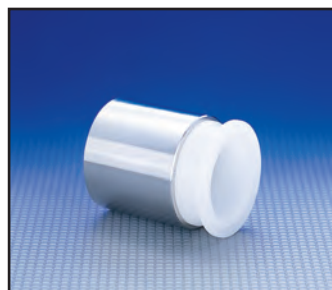
## POLYPROPYLENE FITTINGS

**Male Pipe**



**Part #** P20 **Fitting Material** Polypropylene  
Stainless Steel Collar

**Sanitary**



**Part #** P70 **Fitting Material** Polypropylene  
Stainless Steel Collar

**Female C & G**



**Part #** P83 **Fitting Material** Polypropylene  
Stainless Steel Collar

**Male C & G**



**Part #** P73 **Fitting Material** Polypropylene  
Stainless Steel Collar

Polypropylene fittings have a pressure rating of 120 PSI and temperature rating of up to 180°F.