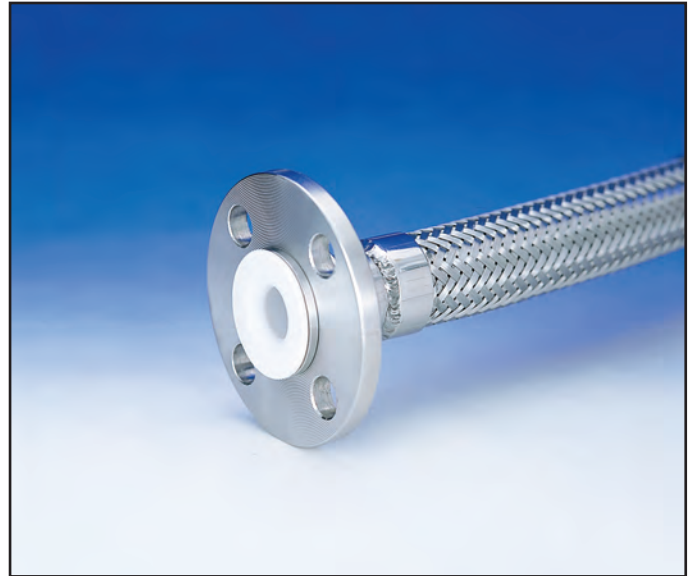


Metal Hose Lined with Smooth-Bore PTFE • MTLC SERIES

Construction

The construction of an MTLC hose begins with flanged metal hose braided with stainless steel. A smooth inner liner of extruded PTFE is inserted into the hose, locked in place, and flared over the flange faces. This PTFE liner is stationary and will not move within the hose. Vent holes in the ends prevent gas build-up between layers.

Flanges for assemblies on pages 16-17 are available in carbon steel, 304 or 316 stainless steel.



Applications

- Acid Transfer
- Chemical Transfer
- Generally suitable for in-plant applications
- Vibration elimination in piping systems
- Large diameter smooth bore
- Slight misalignment in plastic or lined piping systems

Available as factory-built and tested assemblies only.

Benefits

- PTFE protection against chemical attack throughout the entire assembly length.
- Smooth liner - no entrapment areas.
- High flow rates.
- Easily cleaned.
- Offers ruggedness in service.
- Temperature Rating: -65°F (-54°C) to +350°F (+176°C)

Part Number	Nominal Hose Size		Max. Working Pressure*	Min. Burst Pressure	Vacuum Rating (HG)*	Approx. Weight Per Foot
	I.D.	O.D.				
MTLC-16	1.00"	1.64"	500 PSI	2000 PSI	26"	2.00 lbs.
MTLC-24	1.50"	2.33"	400 PSI	1600 PSI	26"	3.86 lbs.
MTLC-32	2.00"	2.88"	300 PSI	1200 PSI	24"	5.00 lbs.
MTLC-48	3.00"	3.94"	200 PSI	800 PSI	24"	5.25 lbs.
MTLC-64	4.00"	4.98"	150 PSI	600 PSI	20"	5.60 lbs.
MTLC-96	6.00"	7.00"	150 PSI	600 PSI	20"	13.00 lbs.
MTLC-128	8.00"	9.10"	125 PSI	500 PSI	20"	20.00 lbs.
MTLC-160	10.00"	11.20"	100 PSI	400 PSI	20"	26.00 lbs.
MTLC-192	12.00"	13.22"	90 PSI	360 PSI	20"	34.50 lbs.

*All pressures and vacuum ratings calculated at 70°F. **Please consult factory regarding flexibility restrictions**